



Chancel Court, Solihull

Guide Price £259,950





PROPERTY OVERVIEW

Situated in a prime location within Chancel Court, and within easy walking distance of Solihull Town Centre and train station. This is a fantastic opportunity to purchase this south facing, two bedroom ground floor apartment. This apartment has been immaculately maintained throughout and greets you with a warm and inviting ambiance. With a generously sized lounge, two double bedrooms and two bathrooms, there is plenty of space in this delightful apartment. The property also benefits from gas central heating, triple glazing and has the added attraction of a secure, allocated underground parking space. The accommodation comprises of: a communal entrance hall, reception hall, living room, fitted breakfast kitchen, two double bedrooms, en suite shower room, family bathroom, communal gardens and a secure allocated underground parking space.



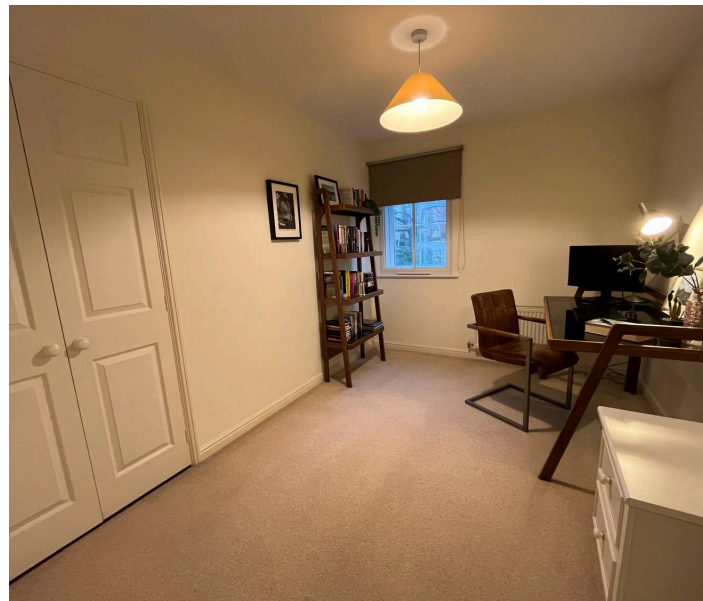
PROPERTY LOCATION

Solihull offers an excellent range of amenities which includes the renowned Touchwood Shopping Centre, Tudor Grange Swimming Pool/Leisure Centre, Park and Athletics track. There is schooling to suit all age groups including Public and Private schools for both boys and girls, plus a range of services including commuter train services from Solihull Station to Birmingham (8 miles) and London Marylebone. In addition, the National Exhibition Centre, Birmingham International Airport and Railway Station are all within an approximate 10/15 minutes drive and the M42 provides fast links to the M1, M5, M6 and M40 motorways.

Council Tax band: D

Tenure: Leasehold

- Easy Walking Distance To Solihull Town Centre
- Immaculately Maintained And Decorated
- Gated Complex
- Spacious Lounge
- Breakfast Kitchen
- Ensuite Shower Room





COMMUNAL ENTRANCE HALL

RECEPTION HALL

LIVING ROOM

17' 10" x 11' 11" (5.44m x 3.62m)

BREAKFAST KITCHEN

14' 8" x 8' 11" (4.48m x 2.71m)

BEDROOM ONE

14' 10" x 13' 2" (4.51m x 4.01m)

BEDROOM TWO

ENSUITE SHOWER ROOM

6' 4" x 5' 6" (1.93m x 1.67m)

BATHROOM

7' 3" x 6' 3" (2.22m x 1.91m)

TOTAL SQUARE FOOTAGE

Total floor area: 76.0 sq.m. = 818 sq.ft. approx.

OUTSIDE THE PROPERTY

COMMUNAL GARDENS

ALLOCATED UNDERGROUND PARKING SPACE



ITEMS INCLUDED IN SALE

Integrated oven, integrated hob, extractor, fridge, freezer, dishwasher, washing machine, all carpets, all blinds and all light fittings.

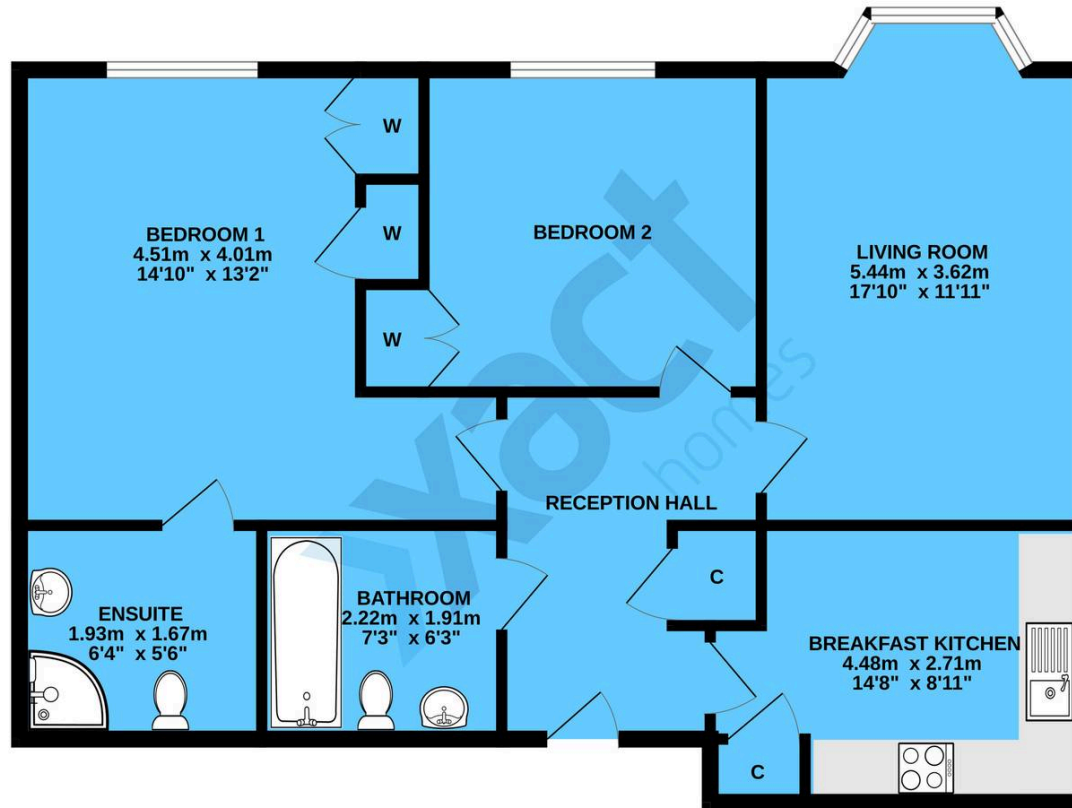
ADDITIONAL INFORMATION

Services - mains gas, electricity and mains sewers.
Broadband - BT Fibre. Ground rent - £250 (pa). Service charge - £2,400 (pa).

INFORMATION FOR POTENTIAL BUYERS

1. MONEY LAUNDERING REGULATIONS - Intending purchasers will be required to produce identification documentation at the point an offer is accepted as we are required to undertake anti-money laundering (AML) checks such that there is no delay in agreeing the sale. Charges apply per person for the AML checks.
2. These particulars do not constitute in any way an offer or contract for the sale of the property.
3. The measurements provided are supplied for guidance purposes only and potential buyers are advised to undertake their measurements before committing to any expense.
4. Xact Homes have not tested any apparatus, equipment, fixtures, fittings or services and it is the buyers interests to check the working condition of any appliances.
5. Xact Homes have not sought to verify the legal title of the property and the buyers must obtain verification from their solicitor.

GROUND FLOOR



TOTAL FLOOR AREA : 76.0 sq.m. (818 sq.ft.) approx.

Whilst every attempt has been made to ensure the accuracy of the floorplan contained here, measurements of doors, windows, rooms and any other items are approximate and no responsibility is taken for any error, omission or mis-statement. This plan is for illustrative purposes only and should be used as such by any prospective purchaser. The services, systems and appliances shown have not been tested and no guarantee as to their operability or efficiency can be given.
Made with Metropix ©2024.

Xact Homes

6 The Square, Solihull - B91 3RB

0121 712 6222 • solihull@xacthomes.co.uk • www.xacthomes.co.uk

xact
HOMES

