



Sevington Close, Solihull

Guide Price £529,950





PROPERTY OVERVIEW

Situated on the popular Hillfield estate, a fantastic opportunity to purchase this four bedroom detached within the Tudor Grange Academy school catchment. This property is offered to the market with NO UPWARD CHAIN and benefits from gas central heating, double glazing and has the added attraction of a third reception room. The accommodation in more detail comprises of: entrance hall, guest cloakroom, living room, dining room, family room, fitted kitchen, utility area, four bedrooms, ensuite shower room, family bathroom, garage/store and astroturf rear garden.

- Popular Hillfield Estate
- No Upward Chain
- Four Bedroom Detached
- Tudor Grange Academy Catchment
- Ensuite Shower Room & Family Bathroom
- Easy Maintained Rear Garden
- Easy Walking Distance To Widney Manor Railway Station
- Early Viewing Essential





PROPERTY LOCATION

Solihull offers an excellent range of amenities which includes the renowned Touchwood Shopping Centre, Tudor Grange Swimming Pool/Leisure Centre, Park and Athletics track. There is schooling to suit all age groups including Public and Private schools for both boys and girls, plus a range of services including commuter train services from Solihull Station to Birmingham (8 miles) and London Marylebone. In addition, the National Exhibition Centre, Birmingham International Airport and Railway Station are all within an approximate 10/15 minutes drive and the M42 provides fast links to the M1, M5, M6 and M40 motorways.

Council Tax band: E

Tenure: Freehold

ENTRANCE HALL

14' 2" x 5' 7" (4.32m x 1.70m)

WC

7' 10" x 2' 9" (2.39m x 0.84m)

LIVING ROOM

17' 0" x 11' 8" (5.18m x 3.56m)

DINING ROOM

11' 8" x 8' 7" (3.56m x 2.62m)

FAMILY ROOM

9' 1" x 8' 8" (2.77m x 2.64m)

KITCHEN

13' 9" x 8' 2" (4.19m x 2.49m)

UTILITY AREA

9' 10" x 7' 6" (3.00m x 2.29m)





FIRST FLOOR

BEDROOM ONE

11' 10" x 11' 6" (3.61m x 3.51m)

ENSUITE

5' 6" x 5' 3" (1.68m x 1.60m)

BEDROOM TWO

11' 6" x 10' 6" (3.51m x 3.20m)

BEDROOM THREE

9' 5" x 7' 0" (2.87m x 2.13m)

BEDROOM FOUR

8' 7" x 8' 7" (2.62m x 2.62m)

BATHROOM

7' 4" x 4' 11" (2.24m x 1.50m)

TOTAL SQUARE FOOTAGE

113 sq.m (1216 sq.ft) approx.

OUTSIDE THE PROPERTY

GARAGE/STORE

ON DRIVE PARKING FOR THREE VEHICLES

ASTROTURF REAR GARDEN

**ITEMS INCLUDED IN THE SALE**

Free standing cooker, American fridge/freezer, extractor, all carpets, blinds and light fittings, wall units in the lounge, units in the dining room and fitted wardrobes in two bedrooms.

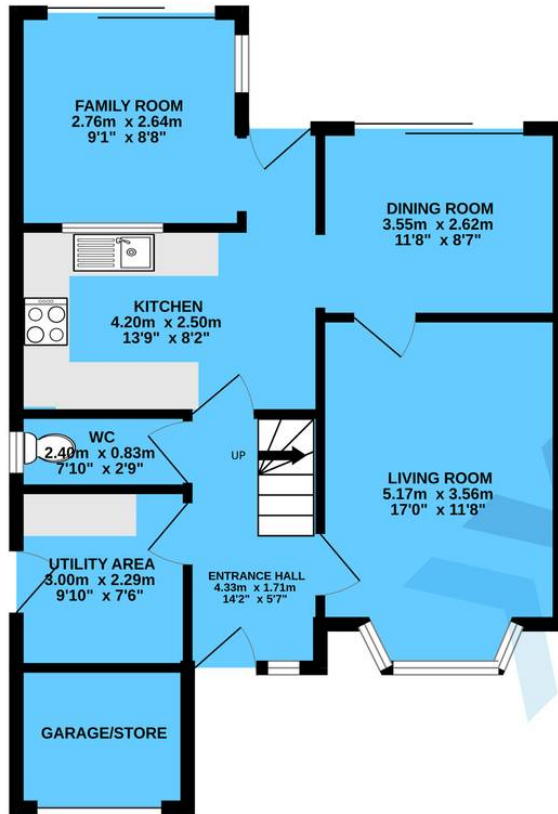
ADDITIONAL INFORMATION

Services - mains gas, electricity and sewers

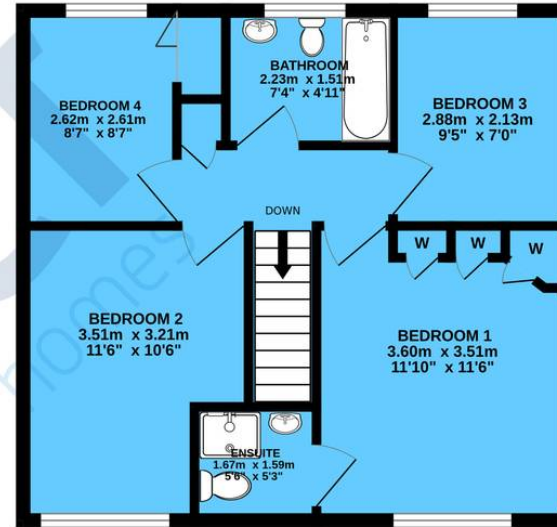
MONEY LAUNDERING REGULATIONS

Prior to a sale being agreed, prospective purchasers will be required to produce identification documents. Your co-operation with this, in order to comply with Money Laundering regulations, will be appreciated and assist with the smooth progression of the sale.

GROUND FLOOR



1ST FLOOR



TOTAL FLOOR AREA : 113.0 sq.m. (1216 sq.ft.) approx.

Whilst every attempt has been made to ensure the accuracy of the floorplan contained here, measurements of doors, windows, rooms and any other items are approximate and no responsibility is taken for any error, omission or mis-statement. This plan is for illustrative purposes only and should be used as such by any prospective purchaser. The services, systems and appliances shown have not been tested and no guarantee as to their operability or efficiency can be given.

Made with Metropix ©2024

Xact Homes

6 The Square, Solihull - B91 3RB

0121 712 6222 • solihull@xacthomes.co.uk • www.xacthomes.co.uk

xact
HOMES

