



Glendon Way, Dorridge

Offers Over £829,000







## PROPERTY OVERVIEW

Situated in a highly sought-after location cul-de-sac of Dorridge, this large five-bedroom detached property originally constructed by David Wilson Homes presents an exceptional family home and living space. The property is accessed via a tarmacadam driveway leading to a double garage, offering ample parking convenience.

Upon entry, the spacious entrance hallway sets a welcoming tone, complemented by a guest cloakroom for added convenience. The dual aspect living room exudes warmth, featuring a charming log burner as a focal point, perfect for cosy evenings. The adjoining remodelled open-plan kitchen and dining area provide a versatile space for every-day living and entertaining, further enhanced by a practical utility room.

Ascending to the first floor, the property hosts five generously proportioned bedrooms, all with fitted wardrobes and three bathrooms, ensuring complete comfort and privacy for all occupants. The principal suite exudes luxury with an en-suite bathroom, offering a private retreat within the home. An additional ensuite to bedroom two and a family bathroom caters to the remaining bedrooms, completing the upper level.







An impressive feature of this residence is the superb purpose-built office nestled within the landscaped rear garden, providing a peaceful and productive workspace away from the main living areas. This bespoke addition perfectly balances work and leisure, adding further appeal to the property. The garden also includes a beautiful gazebo perfect for relaxing and entertaining outside.

In conclusion, an opportunity not to be missed, viewing of this exceptional property is highly recommended to fully appreciate its abundance of features and the location it affords. Contact us today to arrange a viewing and secure your chance to own this distinguished family home.

#### PROPERTY LOCATION

Dorridge is a conveniently located, picturesque and a sought after village, situated on the edge of open countryside, full of local amenities (including a Sainsbury's Superstore), has its own train station with links to Birmingham and London. Sporting facilities located nearby consist of the Knowle & Dorridge Cricket and Tennis Club, Copt Heath Golf Club and the Old Silhillians Rugby Club as well as numerous private gyms. Dorridge has a junior and infant school and the bordering village of Knowle has an excellent junior and infant school and secondary school, Arden Academy. A few minutes' drive away is the nearby town of Solihull, which offers its own excellent state and private schools, Touchwood shopping centre, which houses many shops, restaurants, bars, cinema and John Lewis department store. Dorridge is well placed to access the M42 and M40 motorways, which then provides links to the M1, M6 and M5, enabling travel to Birmingham, Coventry and London. Resorts World and Arena, Birmingham International Airport and Birmingham International Train Station are also within easy access from Dorridge.

Council Tax band: G

Tenure: Freehold







- Large Five Bedroom Detached Property Originally Built By David Wilson Homes
- Highly Sought After Location And Quiet Cul-De-Sac
- Set Behind Tarmacadam Driveway With Double Garage
- Entrance Hallway With Guest Cloakroom Leading To Dual Aspect Living Room With Log Burner
- Remodelled Open Plan Kitchen And Dining Room
- Useful Utility
- Five Bedrooms And Three Bathroom To The First Floor
- Superb Purpose Built Office Located Within A Landscaped Rear Garden
- Viewing Essential



## **ENTRANCE HALLWAY**

### **WC**

4' 11" x 3' 7" (1.50m x 1.10m)

### **LIVING ROOM**

26' 3" x 11' 4" (8.00m x 3.45m)

### **KITCHEN**

16' 1" x 10' 0" (4.90m x 3.05m)

### **DINING AREA**

9' 10" x 9' 10" (3.00m x 3.00m)

### **UTILITY ROOM**

8' 2" x 5' 5" (2.50m x 1.65m)

## **FIRST FLOOR**

### **PRINCIPAL SUITE**

16' 9" x 11' 6" (5.10m x 3.50m)

### **ENSUITE**

9' 0" x 4' 7" (2.75m x 1.40m)

### **BEDROOM TWO**

14' 1" x 12' 10" (4.30m x 3.90m)

### **ENSUITE**

8' 11" x 5' 5" (2.72m x 1.65m)

### **BEDROOM THREE**

13' 11" x 11' 2" (4.25m x 3.40m)

### **BEDROOM FOUR**

12' 8" x 8' 3" (3.85m x 2.51m)

### **BEDROOM FIVE**

10' 8" x 8' 10" (3.25m x 2.70m)

### **BATHROOM**

9' 0" x 7' 1" (2.75m x 2.15m)

### **TOTAL SQUARE FOOTAGE**

Total floor area: 197.0 sq.m. = 2120 sq.ft. approx.





## **OUTSIDE THE PROPERTY**

### **PURPOSE BUILT OFFICE**

### **LANDSCAPED REAR GARDEN**

### **DOUBLE GARAGE**

16' 5" x 16' 5" (5.00m x 5.00m)

### **ITEMS INCLUDED IN SALE**

Integrated oven, integrated hob, extractor, microwave, all carpets, all curtains, fitted wardrobes in five bedrooms, some light fittings, a car charging point which was fitted in 2023, studio/office and a wooden gazebo.

### **ADDITIONAL INFORMATION**

Services – mains gas and electricity. Broadband – Virgin. Loft space – boarded with ladder and lighting.

### **INFORMATION FOR POTENTIAL BUYERS**

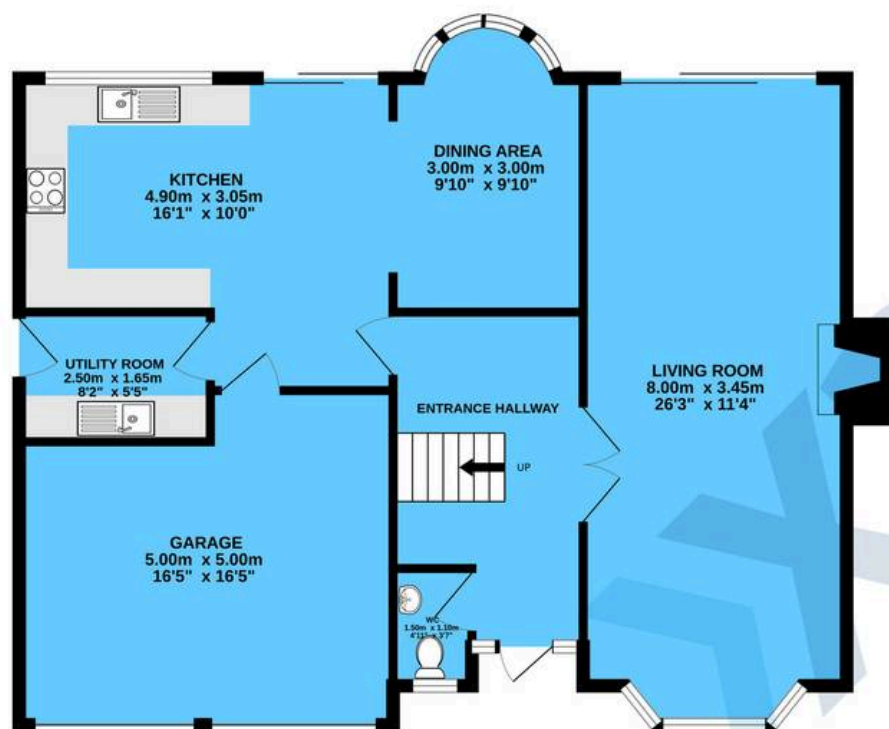
1. MONEY LAUNDERING REGULATIONS – Intending purchasers will be required to produce identification documentation at the point an offer is accepted as we are required to undertake anti-money laundering (AML) checks such that there is no delay in agreeing the sale. Charges apply per person for the AML checks. 2. These particulars do not constitute in any way an offer or contract for the sale of the property. 3. The measurements provided are supplied for guidance purposes only and potential buyers are advised to undertake their measurements before committing to any expense. 4. Xact Homes have not tested any apparatus, equipment, fixtures, fittings or services and it is the buyers interests to check the working condition of any appliances. 5. Xact Homes have not sought to verify the legal title of the property and the buyers must obtain verification from their solicitor.



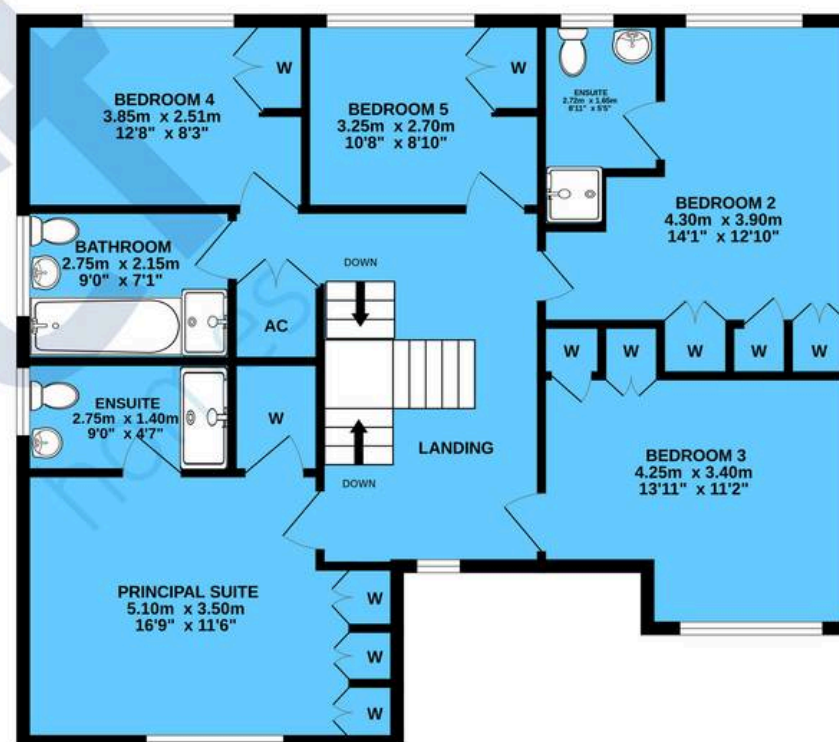




GROUND FLOOR



1ST FLOOR



TOTAL FLOOR AREA : 197.0 sq.m. (2120 sq.ft.) approx.

Whilst every attempt has been made to ensure the accuracy of the floorplan contained here, measurements of doors, windows, rooms and any other items are approximate and no responsibility is taken for any error, omission or mis-statement. This plan is for illustrative purposes only and should be used as such by any prospective purchaser. The services, systems and appliances shown have not been tested and no guarantee as to their operability or efficiency can be given.

Made with Metropix ©2024

# Xact Homes

1632-1636 High Street, Knowle - B93 0JU

01564 777284 • knowle@xacthomes.co.uk • www.xacthomes.co.uk

**xact**  
HOMES

