



Four Ashes Road, Dorridge

Guide Price £1,450,000

xact
EXCLUSIVE





PROPERTY OVERVIEW

Nestled behind a private gated gravelled driveway, this absolutely stunning detached cottage exudes sophistication and charm. Set within outstanding gardens and grounds of approximately 2 acres, this property offers a unique opportunity to reside in a meticulously maintained and significantly extended home.

Upon entering, you are greeted by a welcoming entrance hallway that leads to three exquisite reception rooms – a formal living room, a cosy family room/snug, and an elegant dining room. The heart of the home lies in the open plan breakfast kitchen, which has been modernised to include underfloor heating, a central breakfast bar with granite worksurface throughout, and bifold doors that seamlessly connect the indoor and outdoor living spaces.

The ground floor also boasts a convenient utility room and a guest cloakroom, providing practical amenities for every-day living. Ascend to the first floor to discover four superb bedrooms. The principal bedroom is a luxurious retreat, with a balcony offering picturesque views, a lavish ensuite shower room, and extensive fitted wardrobes. The three remaining bedrooms are serviced by a beautifully appointed family bathroom, ensuring comfort and convenience for all occupants.





The property's exceptional grounds are a true highlight, featuring manicured gardens that include a charming summerhouse overlooking a tranquil pond. Formal borders and lush lawned areas surround the property, adorned with a variety of herbaceous plants, creating a serene outdoor oasis. Immediately located off the kitchen via bi-fold doors is a superb patio / seating area which is perfect for al-fresco dining.

In addition to its enchanting gardens, the property offers captivating views of green belt fields to the side and rear, providing a sense of tranquillity and privacy, rarely found in suburban settings. Parking is made convenient with both a double and single garage, ensuring ample space for vehicles and storage.

In conclusion, this extraordinary property offers a rare combination of refined living spaces, impeccable landscaping, and idyllic surroundings. Perfectly blending traditional charm with modern amenities, this detached cottage presents a unique opportunity to experience a lifestyle of luxury and tranquillity.





PROPERTY LOCATION

Dorridge is a conveniently located, picturesque and a sought after village, situated on the edge of open countryside, full of local amenities (including a Sainsbury's Superstore), has its own train station with links to Birmingham and London. Sporting facilities located nearby consist of the Knowle & Dorridge Cricket and Tennis Club, Copt Heath Golf Club and the Old Silhillians Rugby Club as well as numerous private gyms. Dorridge has a junior and infant school and the bordering village of Knowle has an excellent junior and infant school and secondary school, Arden Academy. A few minutes' drive away is the nearby town of Solihull, which offers its own excellent state and private schools, Touchwood shopping centre, which houses many shops, restaurants, bars, cinema and John Lewis department store. Dorridge is well placed to access the M42 and M40 motorways, which then provides links to the M1, M6 and M5, enabling travel to Birmingham, Coventry and London. Resorts World and Arena, Birmingham International Airport and Birmingham International Train Station are also within easy access from Dorridge.

Council Tax band: G

Tenure: Freehold





- Absolutely Stunning Detached Cottage Set Within Outstanding Gardens And Grounds
- Located Behind A Private Gated Gravelled Driveway Providing Ample Parking And Leading To A Double And Single Garage
- Significantly Extended And Improved Providing Outstanding Accommodation Which Is Meticulously Maintained Throughout
- Entrance Hallway Leading To Three Reception Rooms, Including Formal Living Room, Family Room / Snug And Dining Room Plus Open Plan Breakfast Kitchen With Bi-Fold Doors To Seating Area
- Ground Floor Includes Utility And Guest Cloakroom
- To The First Floor Are Four Superb Bedrooms, The Principal Bedroom Affording A Balcony And Luxury Ensuite Plus Extensive Fitted Wardrobes
- Three Remaining Bedrooms Serviced Via The Luxury Family Bathroom
- Set Within Outstanding Manicured Gardens And Grounds Which Include A Summerhouse Overlooking The Pond, Formal Borders And Lawned Areas Surrounding The Property With Many Herbacious Plants
- The Gardens Also Offer Views To Green Belt Fields To The Side And Rear



ENTRANCE HALLWAY

LIVING ROOM

18' 4" x 12' 8" (5.60m x 3.85m)

FAMILY ROOM / SNUG

12' 6" x 12' 0" (3.80m x 3.65m)

DINING ROOM

15' 11" x 9' 10" (4.85m x 3.00m)

BREAKFAST KITCHEN

15' 11" x 13' 0" (4.85m x 3.95m)

UTILITY

9' 4" x 6' 7" (2.85m x 2.00m)

WC

FIRST FLOOR

PRINCIPAL BEDROOM

16' 9" x 12' 10" (5.10m x 3.90m)

ENSUITE

10' 4" x 6' 7" (3.15m x 2.00m)

BALCONY

BEDROOM TWO

12' 0" x 12' 0" (3.65m x 3.65m)

BEDROOM THREE

10' 6" x 10' 6" (3.20m x 3.20m)

BEDROOM FOUR

13' 0" x 8' 10" (3.95m x 2.70m)

BATHROOM

9' 8" x 6' 9" (2.95m x 2.05m)

TOTAL SQUARE FOOTAGE

190.0 sq.m (2045 sq.ft) approx.



OUTSIDE THE PROPERTY

DOUBLE GARAGE

19' 8" x 18' 1" (6.00m x 5.50m)

SINGLE GARAGE

16' 5" x 10' 8" (5.00m x 3.25m)

DRIVEWAY PARKING FOR MULTIPLE VEHICLES

MANICURED SURROUNDING GARDENS

PATIO SEATING AREA

SUMMERHOUSE

POND



ITEMS INCLUDED IN THE SALE

Siemens integrated oven, Siemens integrated hob, Siemens combi microwave/oven, Siemens fridge/freezer, Siemens dishwasher, warming drawer, all carpets, all curtains, all blinds, all light fittings, Pentair electric underfloor heating in kitchen, fitted wardrobes in one bedroom, garden shed, greenhouse and a 2022 electric car charging point.

ADDITIONAL INFORMATION

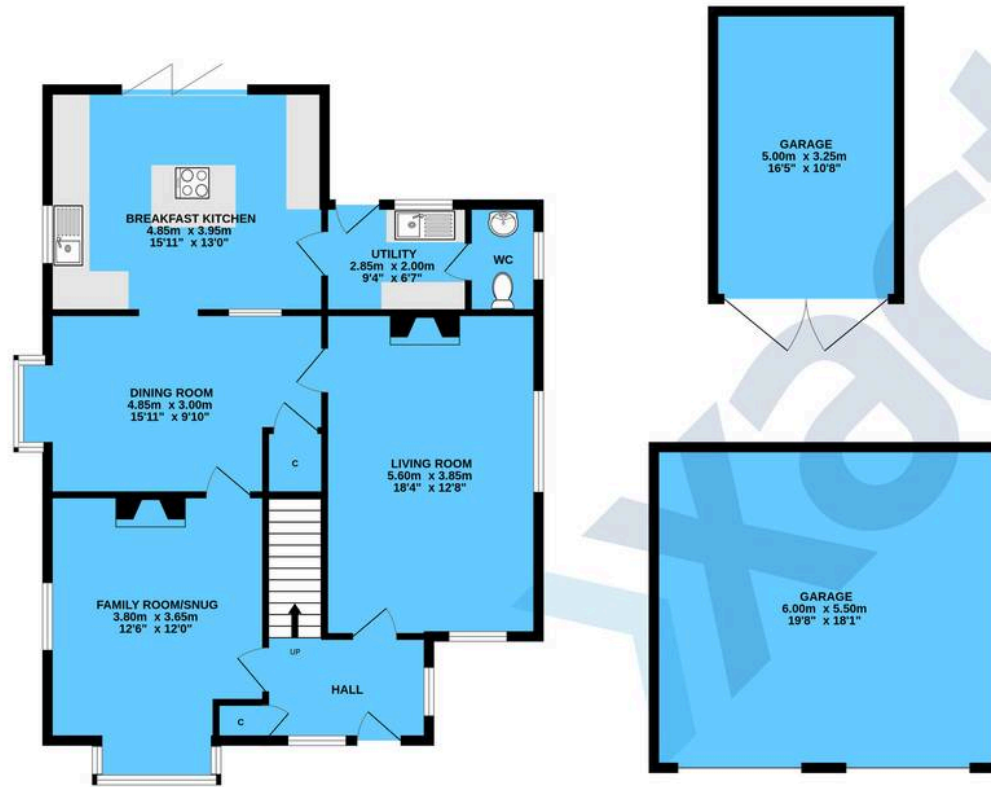
Services – direct mains water, septic tank and electricity. Broadband – FTTP (fibre to the premises). Loft – partially boarded.

INFORMATION FOR POTENTIAL BUYERS

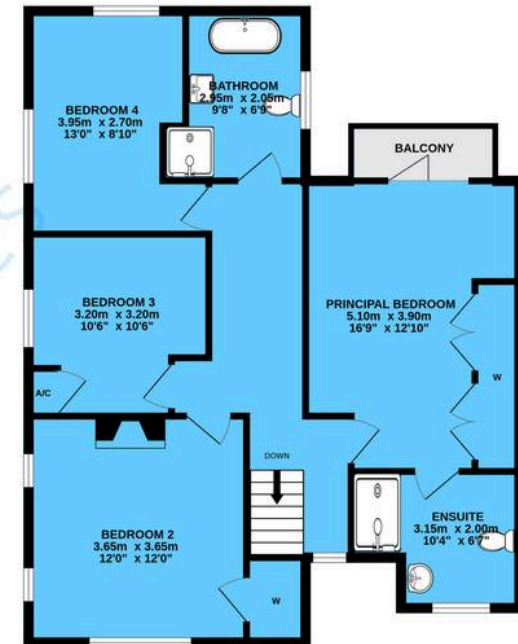
1. MONEY LAUNDERING REGULATIONS – Intending purchasers will be required to produce identification documentation at the point an offer is accepted as we are required to undertake anti-money laundering (AML) checks such that there is no delay in agreeing the sale. Charges apply per person for the AML checks. 2. These particulars do not constitute in any way an offer or contract for the sale of the property. 3. The measurements provided are supplied for guidance purposes only and potential buyers are advised to undertake their measurements before committing to any expense. 4. Xact Homes have not tested any apparatus, equipment, fixtures, fittings or services and it is the buyers interests to check the working condition of any appliances. 5. Xact Homes have not sought to verify the legal title of the property and the buyers must obtain verification from their solicitor.



GROUND FLOOR



1ST FLOOR



TOTAL FLOOR AREA : 190.0 sq.m. (2045 sq.ft.) approx.

Whilst every attempt has been made to ensure the accuracy of the floorplan contained here, measurements of doors, windows, rooms and any other items are approximate and no responsibility is taken for any error, omission or mis-statement. This plan is for illustrative purposes only and should be used as such by any prospective purchaser. The services, systems and appliances shown have not been tested and no guarantee as to their operability or efficiency can be given.

Made with Metropix ©2025

Xact Homes

1632-1636 High Street, Knowle - B93 0JU

01564 777284 • knowle@xacthomes.co.uk • www.xacthomes.co.uk

xact
EXCLUSIVE

