



Stroudley Road, Shirley

Guide Price £410,000





PROPERTY OVERVIEW

Located on a highly sought after road is this delightful three bedroom mid-terrace property which is set over three floors and overlooks countryside landscape. It also has the added benefit of the balance of a 10 year new build guarantee. The property is accessed via an entrance hallway which leads through to a spacious living room benefiting from an abundance of natural light and excellent views of open grassland. At the heart of the property is an open plan kitchen / diner with fully integrated appliances; ample work surfaces and storage; a practical utility providing space for white goods; and a downstairs toilet. The first floor accommodation is made up of two generously sized double bedrooms which are serviced via a family bathroom. The second floor consists of a large principal bedroom with fitted wardrobes, dressing area with ample storage and an ensuite bathroom. Outside the property enjoys a lawn rear garden with a patio seating area and a tarmac driveway to the side of the property providing ample parking for multiple vehicles and a single garage with electricity and electric vehicle charging point. To view this superb home call Xact Homes today on 0121 712 6222.



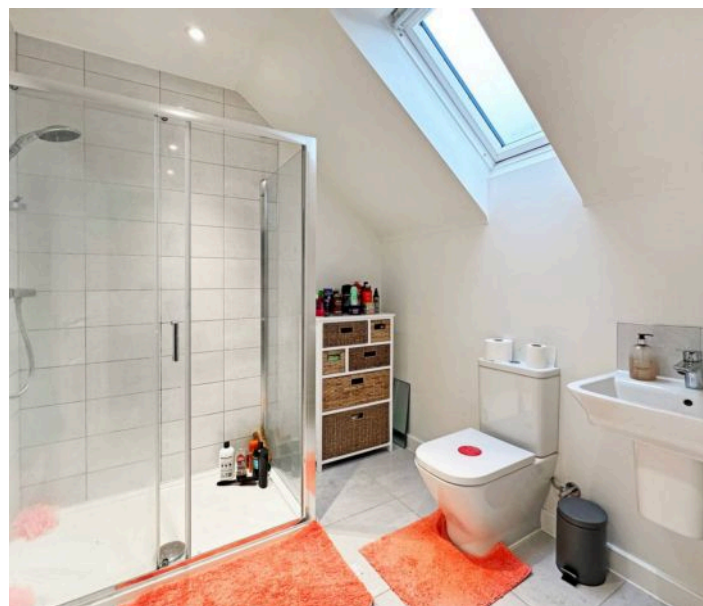
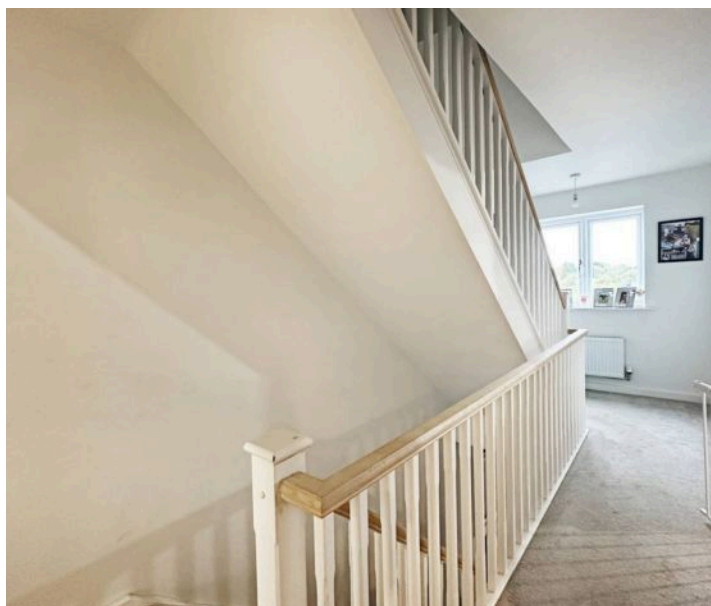
PROPERTY LOCATION

Shirley is a popular suburban area enriched with leisure and retail facilities. The new Parkgate Shopping Development is a vibrant community area accommodating Asda, restaurants, shops and a gymnasium. Shirley High Street also offers additional independent retail outlets and restaurants to suit all tastes and cultures. Within easy access there is a wide range of superstores including Sainsbury's, Tesco, Aldi, Marks & Spencer and a large retail park housing furniture, electrical and DIY retailers. For family education there are a good choice of both Primary and Secondary schools to suit all requirements. Commuters have easy access to the M42 & M40 motorways and there are regular bus and train links to Solihull, Birmingham and Stratford Upon Avon.

Council Tax band: D

Tenure: Freehold

- Three Bedroom Mid-Terrace Property
- Set Over Three Floors
- Balance Of A 10 Year New-Build Guarantee
- Open Plan Kitchen / Diner
- Living Room
- Three Double Bedrooms
- Principal Bedroom With Ensuite
- Driveway & Single Garage





ENTRANCE HALLWAY

LIVING ROOM

11' 9" x 13' 8" (3.59m x 4.17m)

KITCHEN / DINER

11' 11" x 12' 8" (3.64m x 3.85m)

UTILITY

WC

3' 3" x 5' 8" (0.99m x 1.72m)

FIRST FLOOR

BEDROOM TWO

8' 6" x 15' 3" (2.58m x 4.65m)

BEDROOM THREE

8' 8" x 12' 5" (2.64m x 3.78m)

BATHROOM

8' 11" x 6' 8" (2.73m x 2.02m)

SECOND FLOOR

PRINCIPAL BEDROOM

11' 9" x 12' 1" (3.58m x 3.69m)

DRESSING AREA

7' 3" x 5' 10" (2.22m x 1.78m)

ENSUITE

6' 10" x 7' 10" (2.08m x 2.40m)

OUTSIDE THE PROPERTY

GARAGE

AMPLE PARKING



NORTH EAST FACING GARDEN

ITEMS INCLUDED IN THE SALE

Integrated oven, Bosch integrated hob, extractor, fridge, freezer, dishwasher and all carpets.

ADDITIONAL INFORMATION

Services: water meter, electricity and mains sewers.

Broadband: Sky Q Fibre-Optic.

INFORMATION FOR POTENTIAL BUYERS

1. MONEY LAUNDERING REGULATIONS - Intending purchasers will be required to produce identification documentation at the point an offer is accepted as we are required to undertake anti-money laundering (AML) checks such that there is no delay in agreeing the sale. Charges apply per person for the AML checks.

2. These particulars do not constitute in any way an offer or contract for the sale of the property.

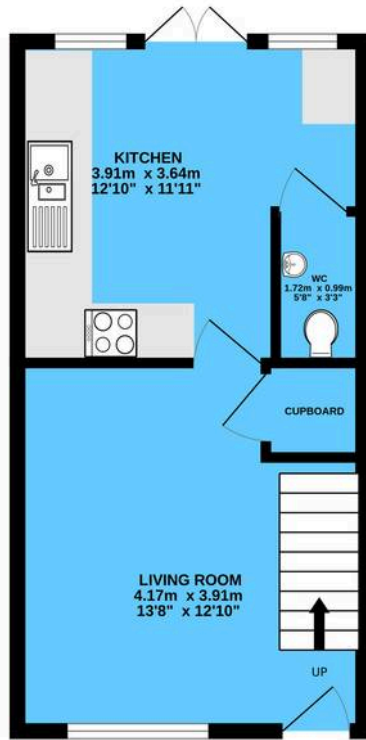
3. The measurements provided are supplied for guidance purposes only and potential buyers are advised to undertake their measurements before committing to any expense.

4. Xact Homes have not tested any apparatus, equipment, fixtures, fittings or services and it is the buyers interests to check the working condition of any appliances.

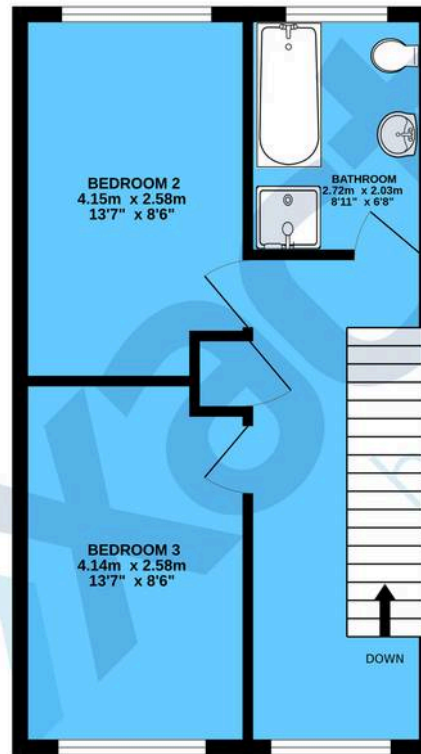
5. Xact Homes have not sought to verify the legal title of the property and the buyers must obtain verification from their solicitor.



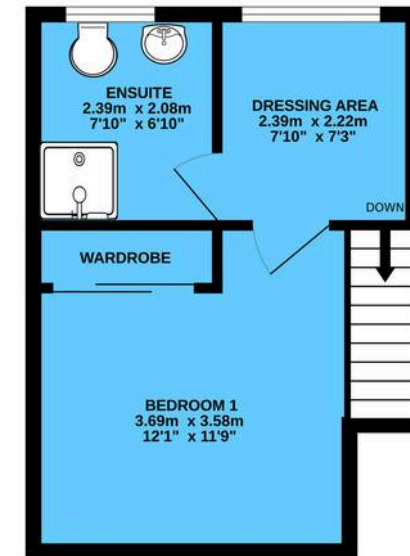
GROUND FLOOR



1ST FLOOR



2ND FLOOR



Whilst every attempt has been made to ensure the accuracy of the floorplan contained here, measurements of doors, windows, rooms and any other items are approximate and no responsibility is taken for any error, omission or mis-statement. This plan is for illustrative purposes only and should be used as such by any prospective purchaser. The services, systems and appliances shown have not been tested and no guarantee as to their operability or efficiency can be given.
Made with Metropix ©2023

Xact Homes

6 The Square, Solihull - B91 3RB

0121 712 6222 • solihull@xacthomes.co.uk • www.xacthomes.co.uk

xact
HOMES

