



Slater Road, Bentley Heath

Guide Price **£450,000**





PROPERTY OVERVIEW

Nestled on a generous plot, this immaculate three-bedroom semi-detached property presents a perfect blend of comfort and style. Upon arrival, the property impresses with a substantial paved driveway, flanked by a single garage and a front lawn, ensuring ample parking space.

As you step inside the welcoming entrance hallway, you are greeted by two spacious reception rooms, including a spacious lounge and a dining room with a bay window, offering a bright and airy atmosphere. Adjacent to the lounge lies a fully-fitted modern kitchen, complemented by a convenient utility room – catering to all your culinary needs.

Upstairs, the property boasts three well-appointed bedrooms, including two generously-sized doubles featuring fitted wardrobes. Completing the upper level is a family bathroom and WC, ensuring practicality for the whole household.

Stepping outside, the rear of the home reveals a beautifully landscaped garden, predominantly laid to lawn and enhanced by a full-width patio – ideal for al fresco dining and outdoor entertaining.

With the added bonus of being offered to the market with no upward chain, this property is ready to become your next cherished home.





PROPERTY LOCATION

The property is located and well placed for all local amenities and schools of Dorridge, Knowle and Bentley Heath, Dorridge railway station providing commuter services between London Marylebone and Birmingham Snow Hill. Knowle, Dorridge and Bentley Heath villages adjoin open greenbelt countryside, yet Solihull town centre is within just three miles and provides further and more comprehensive facilities with Junctions 4 and 5 of the local M42 leading to the Midlands motorway network.

Council Tax band: D

Tenure: Freehold

- Three Bedroom Semi Detached Property Situated Within A Large Plot
- Set Behind A Large Paved Driveway Which Is Supported By A Single Garage & Front Lawn
- All Living Accommodation Is Accessed Via The Entrance Hallway & Is Comprised Of A Spacious Lounge, Dining Room & A Fully Fitted Modern Kitchen Which Is Supported By A Utility Room
- Upstairs, The Property Boasts Three Bedrooms, Two Of Which Are Doubles & Benefit From Fitted Wardrobes, With All Bedrooms Being Serviced By A Family Bathroom & WC
- To The Rear Of The Property Is A Large Landscaped Garden Which Is Mainly Laid With Lawn & Benefits From A Full Width Patio
- Offered To The Market With The Benefit Of No Upward Chain





ENTRANCE PORCH

ENTRANCE HALLWAY

DINING ROOM

13' 10" x 11' 0" (4.21m x 3.36m)

LOUNGE

13' 10" x 10' 4" (4.21m x 3.16m)

KITCHEN

9' 2" x 6' 8" (2.79m x 2.04m)

UTILITY ROOM

10' 8" x 7' 8" (3.26m x 2.34m)

INTEGRAL GARAGE

13' 6" x 7' 10" (4.12m x 2.38m)

FIRST FLOOR

BEDROOM ONE

14' 10" x 10' 4" (4.53m x 3.15m)

BEDROOM TWO

14' 0" x 8' 11" (4.26m x 2.71m)

BEDROOM THREE

8' 6" x 8' 0" (2.58m x 2.43m)

BATHROOM

7' 1" x 4' 7" (2.15m x 1.40m)

WC

TOTAL SQUARE FOOTAGE

104.0 sq.m (1119 sq.ft) approx.

OUTSIDE THE PROPERTY

DRIVEWAY PARKING

LANDSCAPED GARDEN

FULL WIDTH PATIO

**ITEMS INCLUDED IN THE SALE**

Free-standing cooker, fridge, freezer, washing machine, tumble dryer, all carpets, all curtains, all blinds, all light fittings and fitted wardrobes in two bedrooms.

ADDITIONAL INFORMATION

Services – direct mains water (with water meter), sewers and electricity. Loft – boarded.

INFORMATION FOR POTENTIAL BUYERS

1. MONEY LAUNDERING REGULATIONS – Intending purchasers will be required to produce identification documentation at the point an offer is accepted as we are required to undertake anti-money laundering (AML) checks such that there is no delay in agreeing the sale. Charges apply per person for the AML checks.

2. These particulars do not constitute in any way an offer or contract for the sale of the property.

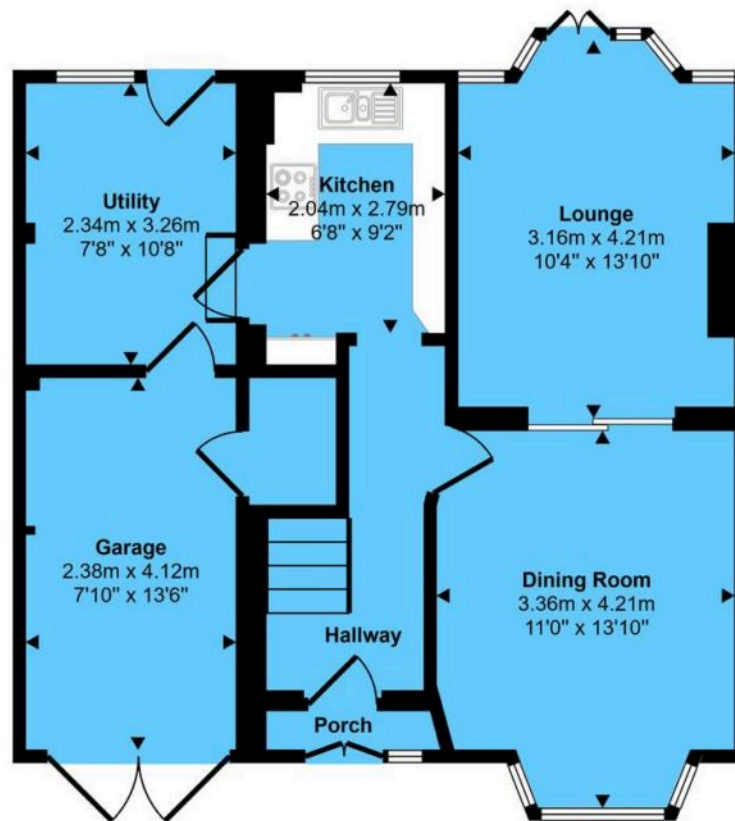
3. The measurements provided are supplied for guidance purposes only and potential buyers are advised to undertake their measurements before committing to any expense.

4. Xact Homes have not tested any apparatus, equipment, fixtures, fittings or services and it is the buyers interests to check the working condition of any appliances.

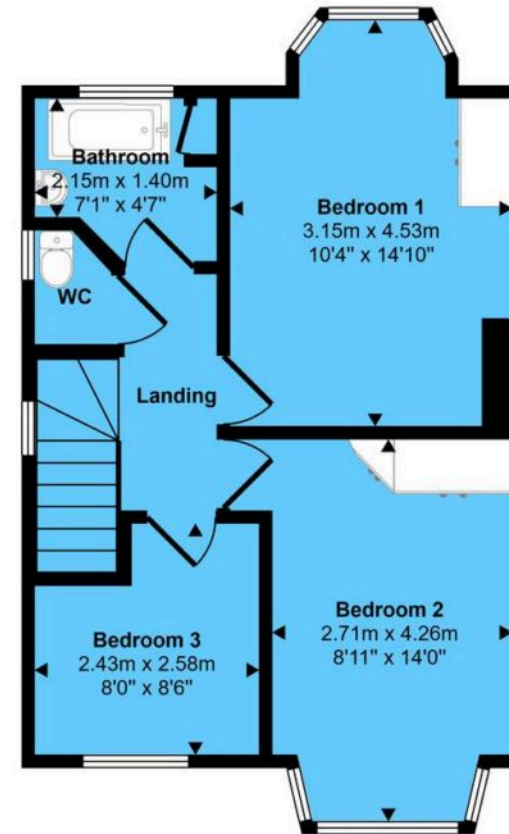
5. Xact Homes have not sought to verify the legal title of the property and the buyers must obtain verification from their solicitor.



Approx Gross Internal Area
104 sq m / 1119 sq ft



Ground Floor
Approx 62 sq m / 662 sq ft



First Floor
Approx 42 sq m / 456 sq ft

This floorplan is only for illustrative purposes and is not to scale. Measurements of rooms, doors, windows, and any items are approximate and no responsibility is taken for any error, omission or mis-statement. Icons of items such as bathroom suites are representations only and may not look like the real items. Made with Made Snappy 360.

Xact Homes

1632-1636 High Street, Knowle - B93 0JU

01564 777284 • knowle@xacthomes.co.uk • www.xacthomes.co.uk

xact
HOMES

